

WELCOME

to

BC
Brittany's Gate

Amherstburg's newest luxury housing development

NOR est. 1988 **BUILT**
commercial • residential • design-build

IN THIS GUIDE

01

Location



02

Overview



03

The Cypress Home



04

The Birch Home



05

The Violet Willow Home

06

The White Pine Home

07

Contact

01

LOCATION

Nestled just minutes from the heart of the fastest growing community in Essex County

Front Rd. North at Texas Rd.



Amherstburg . Ontario

BC
Brittany's Gate





OVERVIEW



THE CYPRESS

\$1,250,000.00
2411sqft
2 storey



THE BIRCH

\$1,150,000.00
2010sqft
Ranch



THE VIOLET WILLOW

\$1,250,000.00
2185sqft
Ranch

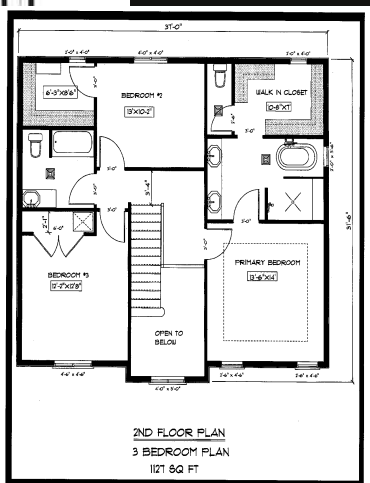


THE WHITE PINE

\$1,375,000.00
3210sqft
2 storey

prices shown are starting points and may not reflect the final price including upgrades

03 THE CYPRESS



\$1,250,000.00

THE CYPRESS

Discover The Cypress Home at Brittany's Gate, where luxury and elegance meet modern living in Amherstburg. This beautifully designed ranch by Nor-Built Construction offers spacious, refined living on a deep executive lot, providing the privacy of no rear neighbors. Nestled on a serene cul-de-sac just off Texas Road, it's the perfect setting for a peaceful lifestyle.

prices shown are starting points and may not reflect the final price including upgrades

THE CYPRESS

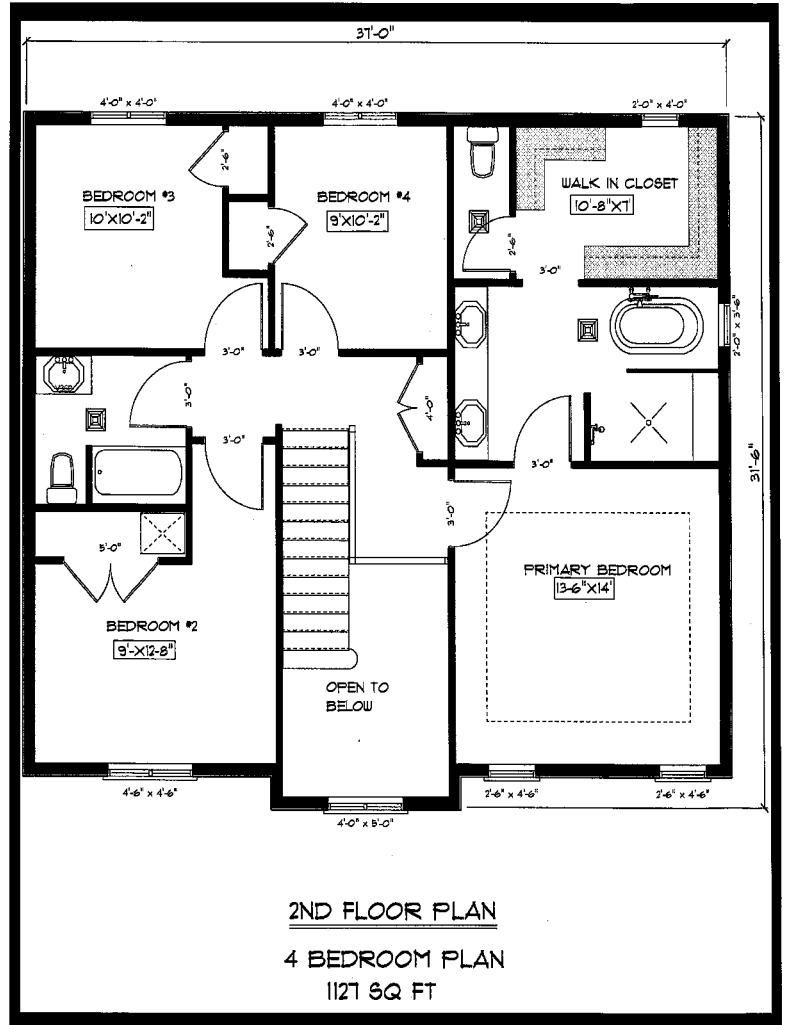
Floor Plan (4 Bedroom)

THE CYPRESS



MAIN FLOOR PLAN

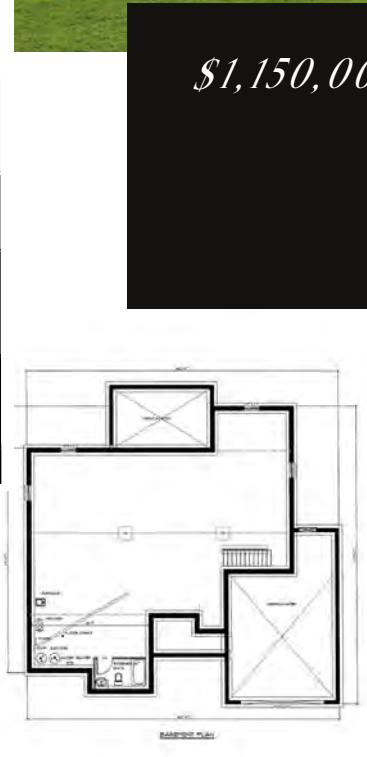
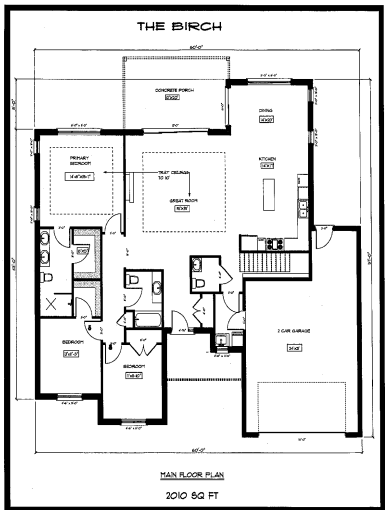
1284 SQ FT



2ND FLOOR PLAN

4 BEDROOM PLAN
1127 SQ FT

04 THE BIRCH



\$1,150,000.00

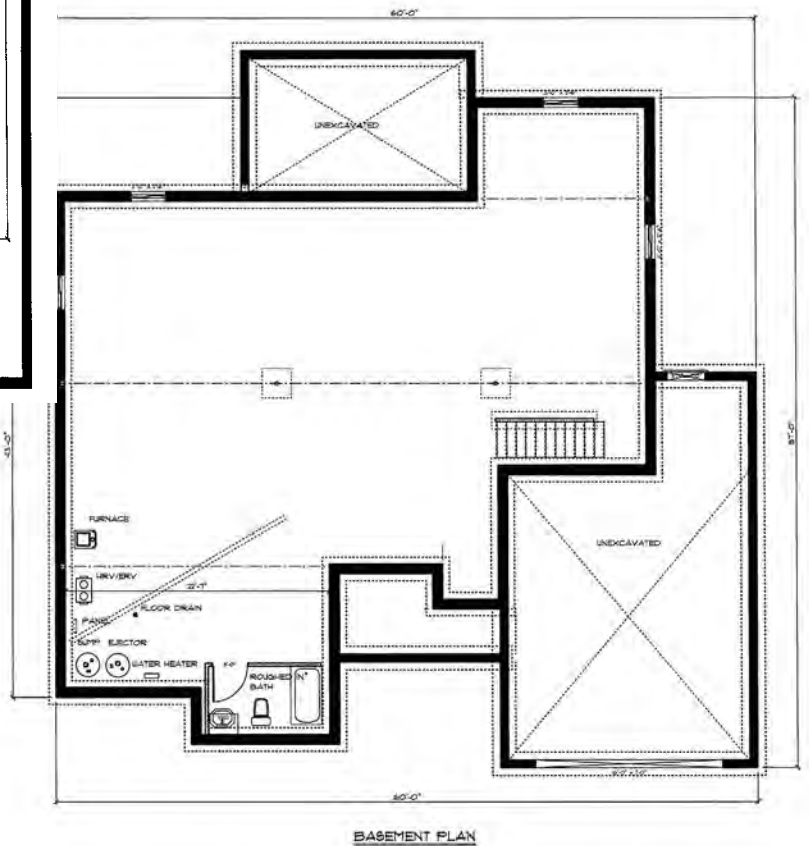
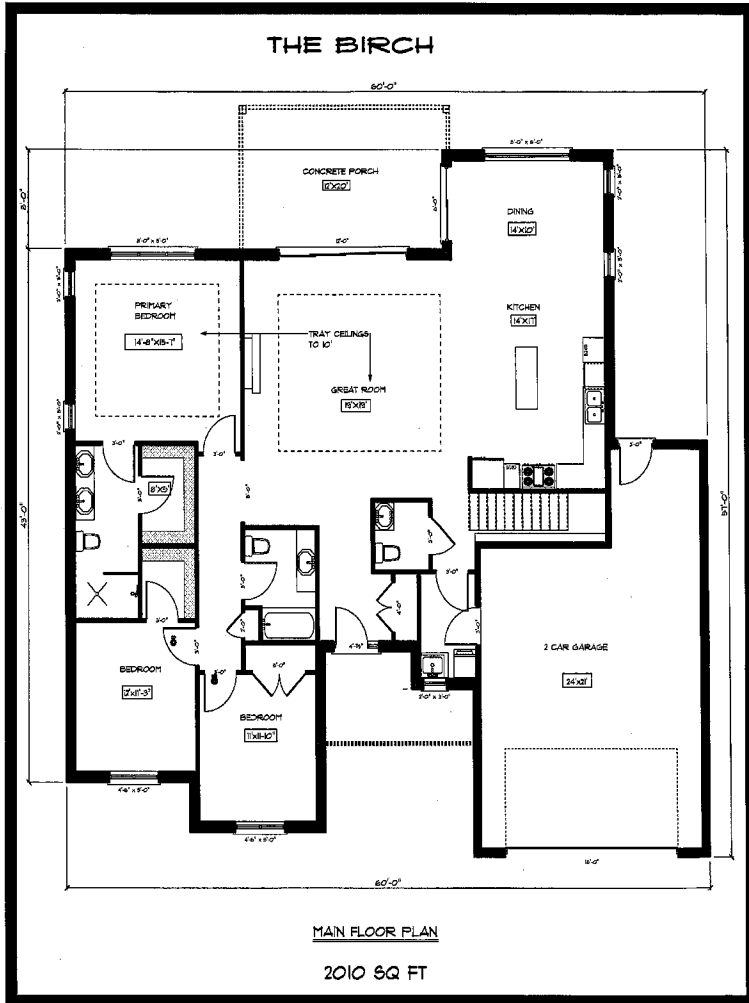
THE BIRCH

Introducing The Birch Home at Brittany's Gate, where luxury and elegance meet modern living in Amherstburg. This beautifully designed ranch by Nor-Built Construction offers spacious, refined living on a deep executive lot, providing the privacy of no rear neighbors. Nestled on a serene cul-de-sac just off Texas Road, it's the perfect setting for a peaceful lifestyle.

prices shown are starting points and may not reflect the final price including upgrades

THE BIRCH

Floor Plan



05

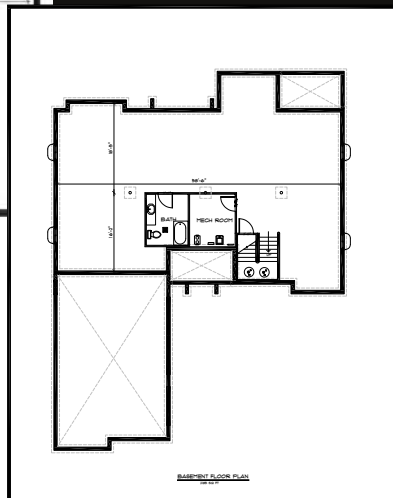
THE VIOLET WILLOW



\$1,250,000.00

THE VIOLET WILLOW

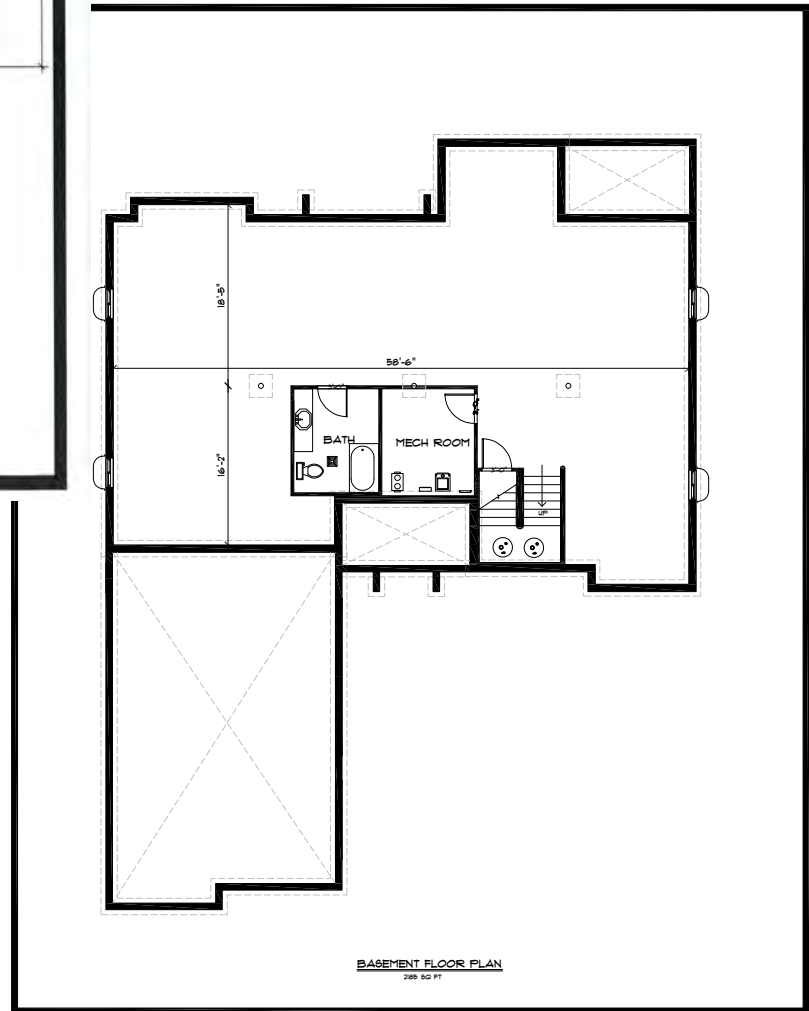
Discover The Violet Willow Home at Brittany's Gate, where luxury and elegance meet modern living in Amherstburg. This beautifully designed ranch by Nor-Built Construction offers spacious, refined living on a deep executive lot, providing the privacy of no rear neighbors. Nestled on a serene cul-de-sac just off Texas Road, it's the perfect setting for a peaceful lifestyle.



prices shown are starting points and may not reflect the final price including upgrades

THE VIOLET WILLOW

Floor Plan





THE WHITE PINE



\$1,375,000.00

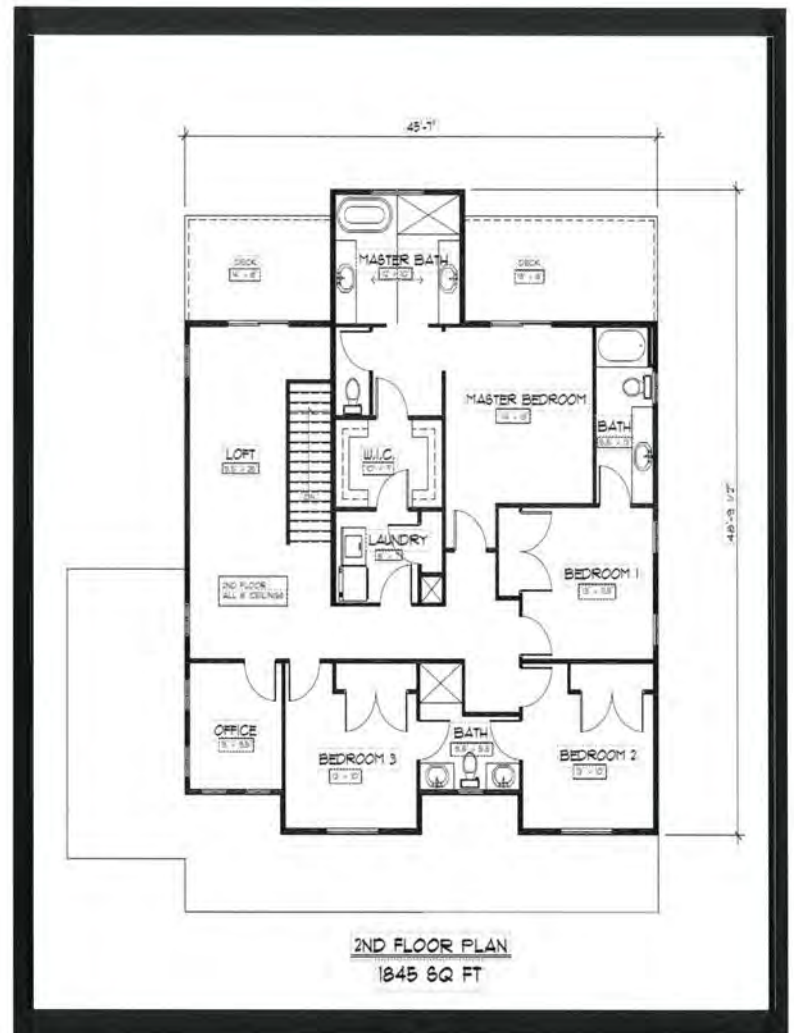
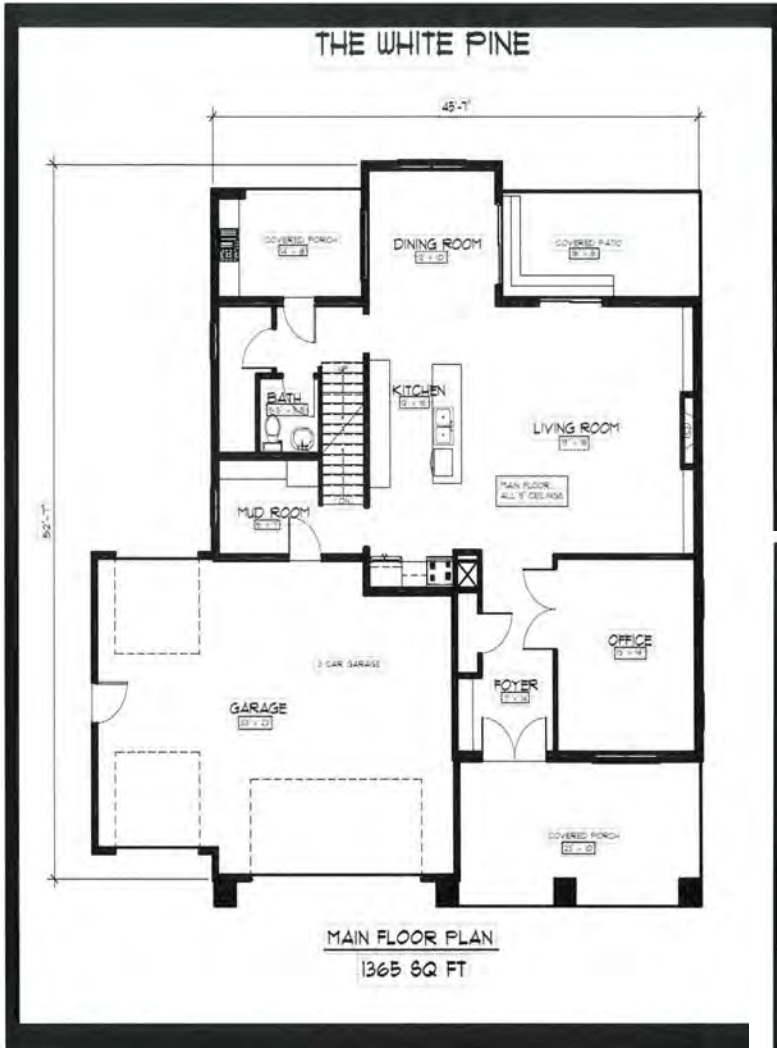
THE WHITE PINE

Introducing The White Pine Home at Brittany's Gate, where luxury and elegance meet modern living in Amherstburg. This beautifully designed ranch by Nor-Built Construction offers spacious, refined living on a deep executive lot, providing the privacy of no rear neighbors. Nestled on a serene cul-de-sac just off Texas Road, it's the perfect setting for a peaceful lifestyle.

prices shown are starting points and may not reflect the final price including upgrades

THE WHITE PINE

Floor Plan



07



BG
Brittany & Gate

NOR^{est. 1988} BUILT
commercial • residential • design-build



Call:
519.736.1892

Email:
norbert@norbuilt.com